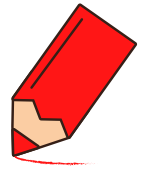


litaðu öll a

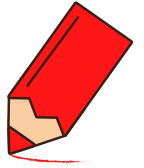


A collection of letters in circles for a visual discrimination task. The letters are arranged in several columns:

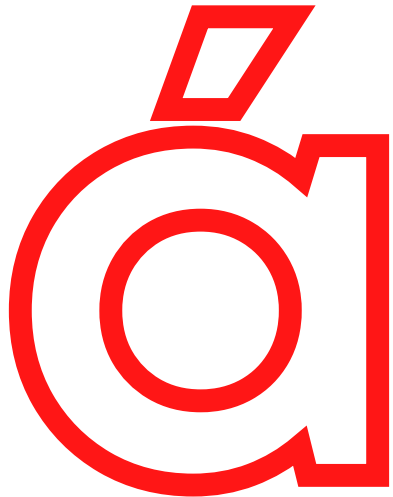
- Column 1: a, o, o, a, á
- Column 2: á, é, a, e
- Column 3: a, a, e, e
- Column 4: a, æ, ö, a, é
- Column 5: a, a, ö, o, a

In the center of the page is a large red letter 'a' with a thick outline, serving as a reference for the letter to be identified.

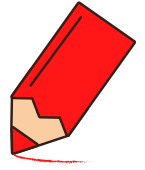
litaðu öll **á**



A collection of letters in circles for a search activity. The letters include: á, a, æ, e, o, á, a, á, a, á, a, á, é, ö, á, o, á, o.

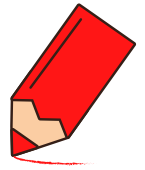


litaðu öll **e**



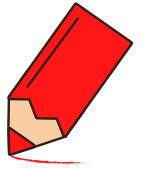
A collection of letters in circles for a dot-marker activity. In the center is a large red circle containing a stylized letter 'E'. Surrounding it are smaller circles containing the following letters: 'á', 'é', 'o', 'ó', 'á', 'a', 'a', 'o', 'á', 'e', 'æ', 'ó', 'a', 'a', 'é', 'e', 'e', 'a', 'a', 'e', 'e', 'ö', 'a', 'é', 'a', 'a', 'a', 'e', 'a', 'a', 'é', 'a'.

litaðu öll **é**



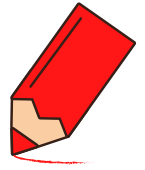
A collection of letters in circles for a search activity. The letters are: á, e, é, e, a, ó, é, e, o, a, ó, á, é, a, a, ó, é, e, e, é, e, æ, é. In the center is a large red letter 'É' with a red diamond shape above it.

litaðu öll i



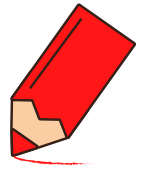
á	é	i	a	i	é
i	i			i	á
i	a			é	é
a	é	a		i	a
e		i			é

litaðu öll í



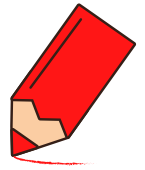
A collection of Icelandic vowels arranged in a grid, with a red pencil icon in the center. The vowels are: á, í, ö, é, i, í, i, á, i, æ, í, é, a, é, o, o, í, i, e, í, i, é.

litaðu öll o



A collection of letters in circles for a dot-marker activity. The letters are arranged in a grid-like pattern. The letter 'o' is highlighted with a thick red border. The letters include: 'o', 'í', 'æ', 'é', 'o', 'i', 'o', 'o', 'h', 'í', 'é', 'í', 'a', 'é', 'a', 'ó', 'o', 'o', 'e', 'o', 'i', 'é'.

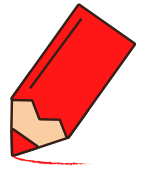
litaðu öll ó



A collection of letters in circles for a visual discrimination task. The letters are arranged in a grid-like pattern. In the center, there is a large red letter 'Ó' with a red diamond shape above it. The other letters are in black circles and include: 'ó', 'é', 'í', 'o', 'ó', 'é', 'ó', 'o', 'ó', 'i', 'ó', 'í', 'ó', 'a', 'ó', 'é', 'o', 'ó', 'a', 'ó', 'é', 'ó', 'o', 'ó', 'é'.



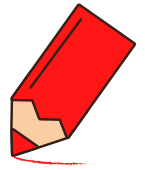
litaðu öll **u**



A collection of letters in circles for a coloring activity. The letters are arranged in a grid-like pattern. In the center, there is a large, bold red letter 'U'. The other letters are in black circles:

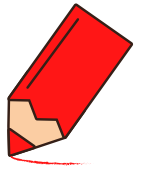
- Row 1: u, í, æ, u, ó, u
- Row 2: ó, æ, U, í, o
- Row 3: u, ó, U, é, u
- Row 4: a, ó, æ, o
- Row 5: ó, u, ó, ó, u

litaðu öll ú



A collection of Icelandic characters arranged in a grid. The characters are: ú, ö, u, ó, ú, ú, u, ú, h, ú, ú, é, a, æ, o, u, ó, ó, ú. In the center of the grid is a large, bold red letter 'Ú' with a red diamond shape above it, serving as a visual guide for the letter to be identified.

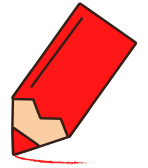
lítaðu öll **y**



A grid of letters in circles for a word search. The letters are arranged as follows:

y	ú	i	y	ú	y
ó	y	<b>y</b>	ú	o	
y	ú	ú	y	y	
a	ú	í	y	o	
y	u	y	ó	ú	

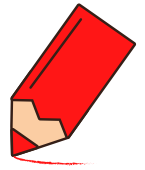
## lítaðu öll **y**



A collection of Icelandic characters arranged in a grid. In the center is a large, bold red letter 'ý'. Surrounding it are smaller characters, each inside a black circle:

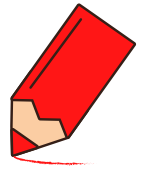
- Top row: 'ý', 'ú', 'a', 'y', 'y'
- Second row: 'ó', 'y', 'y', 'y', 'ý'
- Third row: 'ý', 'y', 'y', 'y', 'ý'
- Fourth row: 'a', 'ý', 'y', 'y', 'o'
- Fifth row: 'ý', 'u', 'æ', 'ó', 'ú'
- Bottom row: 'y', 'y', 'y'

litaðu öll æ



A collection of Icelandic characters arranged for a coloring activity. In the center is a large, red-outlined character 'æ'. Surrounding it are several smaller circles, each containing a different Icelandic character: 'æ', 'ö', 'ó', 'ý', 'y', 'ú', 'o', 'u', and 'á'. The characters are scattered across the page, with 'æ' appearing most frequently.

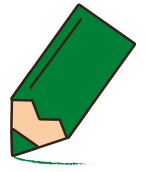
litaðu öll ö



A grid of letters in circles for a visual discrimination task. The letters are arranged in 6 rows and 5 columns. The central letter 'Ö' is highlighted in red, with two red squares above it. The other letters are in black circles.

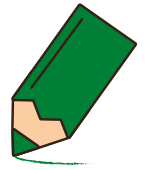
ö	ö	ö	ú	ö
ó	y	Ö	ö	ý
ý	y	Ö	ö	ö
a	ý	i	y	o
ö	u	y	ó	ö
ö	ö	y	ó	ö

litaðu öll **b**



A collection of letters arranged in a grid-like pattern. In the center is a large, bold, green lowercase letter 'b'. Surrounding it are several smaller lowercase letters, each enclosed in a black circle. The letters are: 'b', 'f', 'k', 'b', 'b', 'h', 'l', 'h', 'd', 'b', 'h', 'r', 'd', 'g', 'h', 'g', 'p', 'b', 'g', 'b', 'g', 'b', 'b'.

litaðu öll d

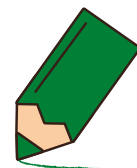


A collection of letters in circles for a matching exercise. In the center is a large green letter 'd'. The letters in the circles are:

- Row 1: b, b, f, b, h, k
- Row 2: d, d, d, r, d
- Row 3: b, d, d, b, b
- Row 4: g, d, h, d, d
- Row 5: d, p, g, b, b



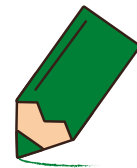
litaðu öll **ð**



A grid of letters for a matching exercise. The letters are arranged in five rows and five columns. A large green letter 'ð' is in the center. The letters in the grid are:

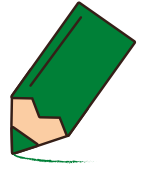
ð	b	f	h	ð
ð	d		r	d
b	d	ð	b	
ð		h	ð	d
d	ð	g	ð	b

litaðu öll f



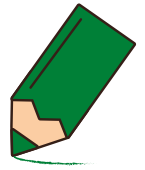
A collection of letters arranged in a grid for a coloring activity. The letters are: b, f, k, b, f, h, f, d, b, d, f, g, f, h, f, f, p, h, b, f, f, g, g, b. In the center of the grid is a large, bold, green letter 'f'.

litaðu öll g



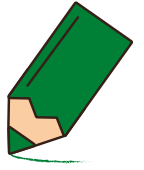
A collection of letters arranged in a grid-like pattern. In the center is a large green lowercase letter 'g'. Surrounding it are several smaller lowercase letters, each enclosed in a black circle. The letters are: 'b', 'f', 'g', 'h', 'g', 'g', 'd', 'f', 'g', 'b', 'f', 'd', 'f', 'g', 'f', 'f', 'g', 'f', 'g', 'b', 'g', 'g', 'f', 'g'.

litaðu öll h



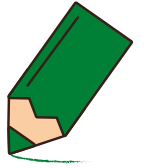
A collection of letters for a matching exercise. In the center is a large green letter 'h'. Surrounding it are several smaller letters, each enclosed in a black circle. The letters are: 'g', 'b', 'f', 'k', 'l', 'h', 'f', 'd', 'f', 'h', 'r', 'h', 'g', 'h', 'd', 'g', 'h', 'p', 'b', 'g', 'f'.

litaðu öll j



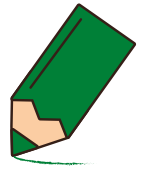
A collection of letters arranged in a grid-like pattern. In the center is a large, bold, green letter 'J'. Surrounding it are several smaller letters, each enclosed in a thin black circle. The letters are: 'g', 'b', 'f', 'j', 'j', 'h', 'j', 'd', 'l', 'h', 'r', 'h', 'j', 'h', 'd', 'g', 'h', 'p', 'j', 'b', 'j', 'j', 'g', 'j'.

litaðu öll k



A grid of letters for a coloring activity. The letters are arranged in a roughly rectangular shape around a central large letter 'K'. The letters in the circles are: g, b, f, j, l, h, j, d, j, h, r, h, g, j, p, h, b, g, j, j. The central letter 'K' is large and outlined in green.

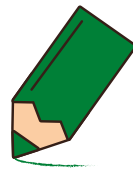
litaðu öll l



A grid of letters for a coloring activity. The letters are arranged in five rows and five columns. The letter 'l' is highlighted with a thick green rectangular border.

g	b	l	j	j
l	l	l	l	l
j	j	l	d	h
g	p	h	b	l
j		l		j

litaðu öll **m**

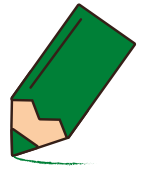


A collection of letters in circles and a large central letter 'm'. The letters in circles are: g, l, m, b, m, h, m, m, i, j, h, m, j, d, m, h, p, m, j, l, j.

**m**



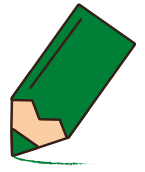
litaðu öll n



A collection of letters in circles and a large letter 'n' for a matching exercise. The letters in circles are: g, n, l, m, m, h, m, m, i, n, m, j, h, i, p, h, m, n, n, l, n.

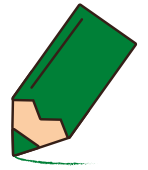
A large green letter 'n' is positioned in the center of the page.

litaðu öll p



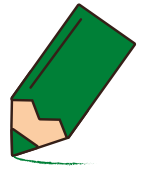
A collection of letters in circles for a dot-marker activity. A large green letter 'P' is in the center. Other letters in circles are: g, n, l, p, h, p, m, n, p, p, h, m, j, n, h, l, p, h, m, l, p.

litaðu öll r



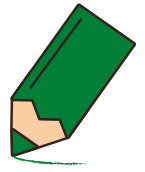
A grid of letters for a visual discrimination task. The letters are arranged in five rows and five columns. A large green letter 'r' is placed in the center of the grid. The other letters are: Row 1: r, n, l, m, h, p; Row 2: p, r, r, r, r; Row 3: n, j, h, n, h; Row 4: m, p, h, m, r; Row 5: r, p, r, m, p.

litaðu öll s



A collection of letters in circles for a matching exercise. In the center is a large green letter 'S'. Surrounding it are several smaller circles, each containing a letter. The letters are: 'r', 's', 'l', 's', 'h', 's', 's', 'r', 'n', 'r', 'r', 'r', 'h', 'm', 'j', 's', 'h', 'r', 's', 'p', 'h', 'm', 'r', 'p', 's', 'r', 'p', 'p'.

litaðu öll t

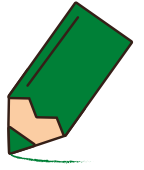


A grid of letters in circles for a coloring activity. The letters are arranged as follows:

r	s	l	t	h	t
t	r	t	r	t	r
n	j	h	s	h	h
t	p	h	s	r	r
s	p	t	t	t	p

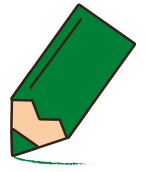
In the center of the grid is a large, stylized green letter 't' with a thick outline, intended to be colored.

litaðu öll v



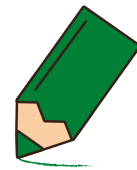
A grid of letters for a visual discrimination task. In the center is a large, bold, green uppercase letter 'V'. Surrounding it are several lowercase letters, each enclosed in a black circle. The letters are arranged in a roughly rectangular pattern around the central 'V'. The letters include: 'v', 's', 'h', 'v', 't', 'r', 't', 'r', 'n', 'v', 's', 'v', 't', 'v', 't', 'r', 'v', 'p', 't', 'r', 'p'.

litaðu öll x



A grid of letters for a coloring activity. The letters are arranged in a roughly rectangular shape around a central large green 'X'. The letters in the circles are: Row 1: x, l, x; Row 2: s, s, h; Row 3: t, x, x, r; Row 4: x, j, s, h; Row 5: t, h, s, r; Row 6: s, x, x, r. The central letter is a large green 'X'.

litaðu öll **p**



A large green lowercase letter 'p' is centered on the page. Surrounding it are 20 smaller circles, each containing a lowercase letter. The letters in the circles are: p, s, p, h, p, t, s, h, r, t, r, b, h, j, s, h, r, t, p, h, r, p, b.